



# INDICE

1. PRESENTATION
2. HOW DO I ACCESS THE CATALOGUE?
3. HOW CAN I REGISTER AS A USER?
4. HOW MUCH DOES IT COST TO BECOME A REGISTERED USER?
5. WHAT ARE THE ADVANTAGES OF BEING A REGISTERED USER?
6. HOW DO I BROWSE AROUND THE PORTAL?
7. HOW CAN I SEARCH FOR A SPECIFIC PRODUCT?
8. CAN I ORDER PRODUCTS BY PRICE?
9. CAN I PLACE ORDERS FROM THE WEB PAGE?
10. CAN I BUY A COMPLETE COMPOSITION?
11. CAN I MAKE PRO FORMA INVOICES FOR MY CLIENTS?
12. HOW CAN I MONITOR MY ORDERS AND MY PRO FORMA  
INVOICES?



## 1. PRESENTATION: ALL SPANISH FURNITURE IN

[www.marninterior.com](http://www.marninterior.com)

The portal we present to you has been created to offer a complete service to all architects and designers in the furniture world, who, like yourself, would like to have a wide range of possibilities when choosing products for their projects. The portal currently has over 5,000 articles of the very best of Spanish furniture and increases by 500 every day. By the beginning of 2003, we hope to be able to offer you a perfectly structured catalogue with over 10,000 products so that you may find everything you need on our web site. The portal includes references from all styles of Spanish furniture, which means that whatever the project you are working on, you will always find products that fall in line with your needs.

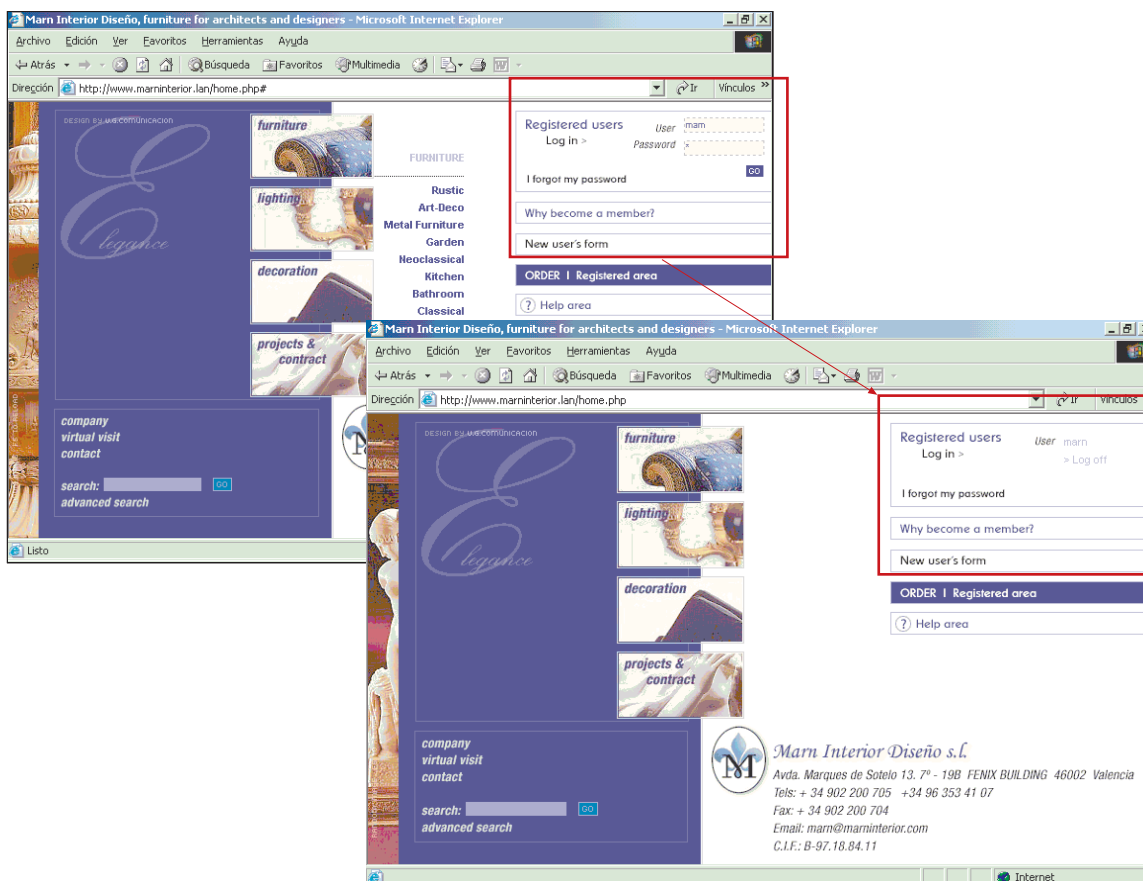
Services of the portal:

- Catalogue with over 5,000 references.
- Advanced predictive search engine.
- On-line orders.
- Sending of pro forma invoices to your clients by mail.
- Personal administrator of transactions made.
- Free e-mails for our users.

## 2- HOW DO I ACCESS THE PRODUCT CATALOGUE?

Only registered users can view the complete product catalogue. Other users are authorised to see only a small sample. If you already have a username and password, follow the instructions to authenticate yourself as a registered use: At the top right of the HOME PAGE you will see the boxes you have to complete to authenticate yourself as a registered user. Once you have entered the details, click on the GO button.

If you have carried out this step correctly, the page will reload and your user name will appear, together with the LOG OFF option. From this moment on, you will be able to browse the portal unrestrictedly.



### 3- HOW CAN I REGISTER AS A USER?

If you haven't received your password by post or e-mail, you can request it on the web page as follows:

Click on New Users Form, which is at the top right of the HOME PAGE and complete the requested details. Once you have finished, click OK. In a few minutes, you will receive your username and password by e-mail.

Microsoft Internet Explorer

Marn Interior Diseño

*Please check the form*

CLOSE

Name:

Last Name:

Company:

Position in company:

Address:

City:

Country:

Telephone:

Fax:

Mobile phone:

E mail:

OK

### 4- HOW MUCH DOES IT COST TO BECOME A REGISTERED USER?

Nothing. Once you receive your username and password, you can use the services of the portal at no charge whatsoever.

## 5- WHAT ARE THE ADVANTAGES OF BEING A REGISTERED USER?

You will be able to see the best photographs of furniture available on the Internet, consult prices of products, send estimates to your clients and monitor your orders/estimates.



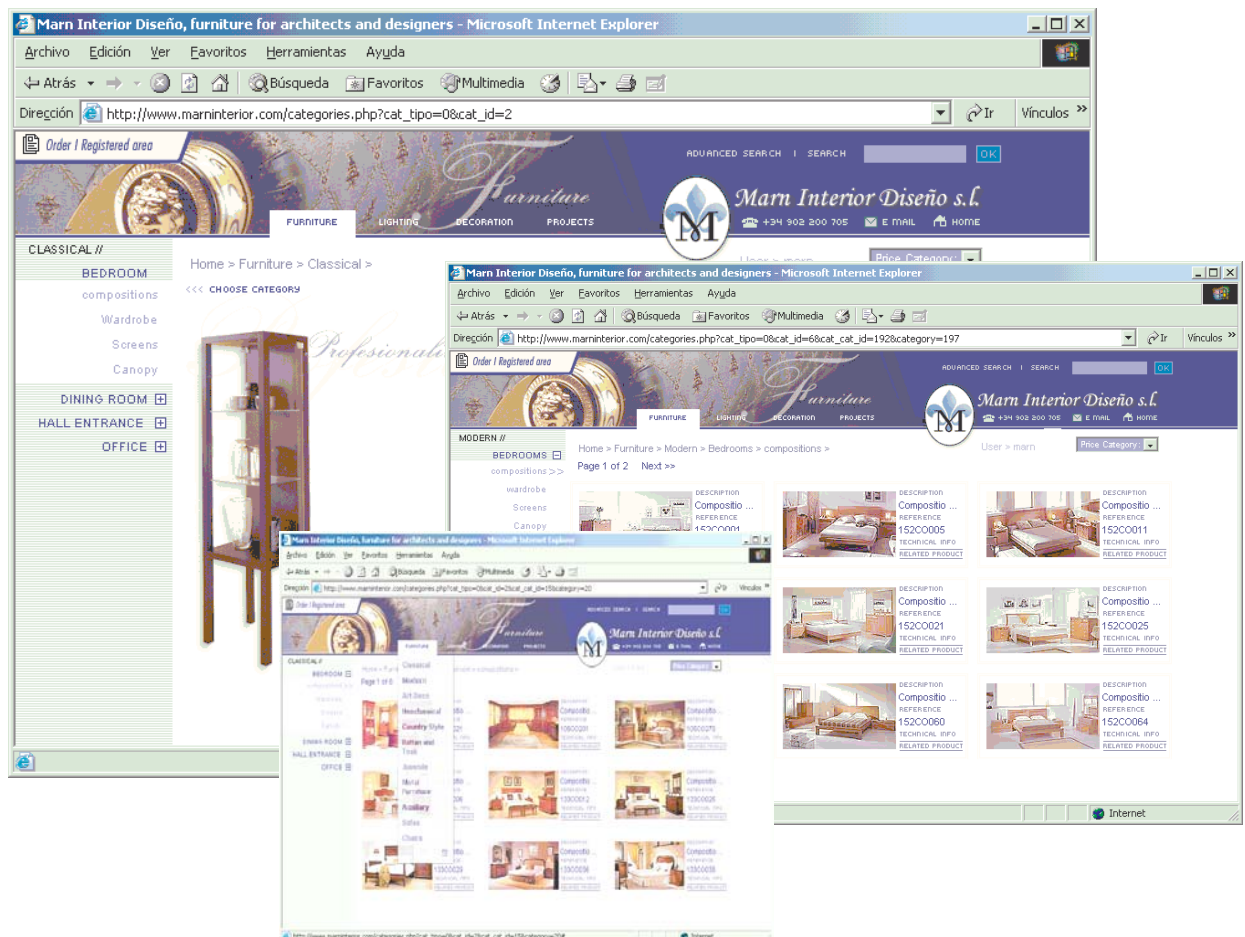


## **6- HOW DO I BROWSE AROUND THE PORTAL?**

Browsing has been designed so that you may access the different sections from anywhere in the portal in such a way that it is not necessary to access the HOME PAGE to change from one style of furniture to another. At the top of the screen are the 4 general sections (Furniture, Lighting, Complements, Projects & Contract), with dropdown boxes including the subcategories referring to the style of furniture (Classical, Modern, etc.).

Once you have selected the style, a new menu appears on the left of the screen. This enables you to select the type of room you wish to decorate. There is one more selection level, which drops down when one of the options is clicked. This shows the different pieces of furniture that may be found in said room (Bed, Table, Mirror, etc.). The products are organised as follows:

FURNITURE:	LIGHTING	DECORATION	PROYECTS AND CONTRACTS
- Classical	- Lighting	- Bedrooms	- Contract
- Modern		- Ceramics	- Work samples
- Art-Deco		- Decoration items	
- Neoclassical		- Household	
- Country style		-Equipment	
- Juvenile			
- Metal Furniture			
- Auxiliary			
- Sofas			
- Chairs			

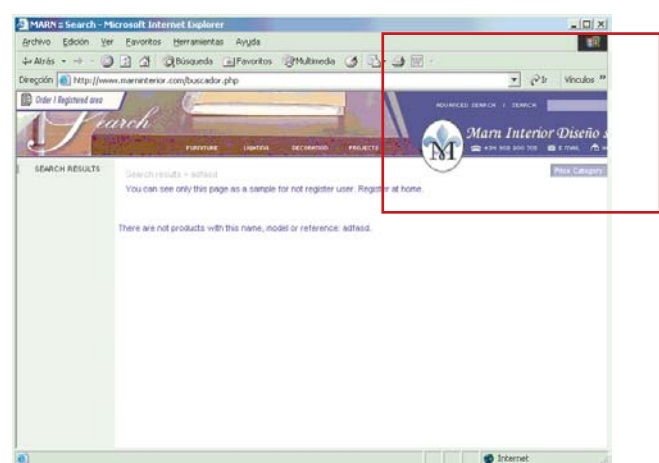
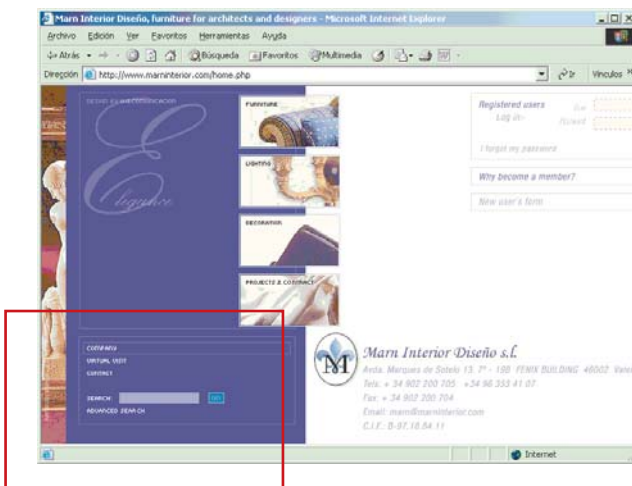




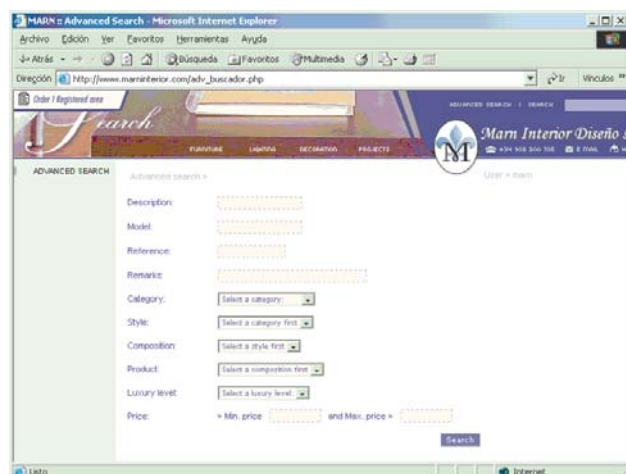
## 7- HOW CAN I SEARCH FOR A SPECIFIC PRODUCT?

There are two ways of performing specific searches: the predictive search and the advanced search.

**Predictive searching:** ideal for finding results related to a word or specific set of letters. The system returns all the products that coincide with the object of the search in the following fields: name, reference or category. This search mode is recommended when you are looking for a product and you know its reference or name.



**Advanced search:** This search mode enables the filtering of results by different criteria. It is a fast way of finding a specific group of products..



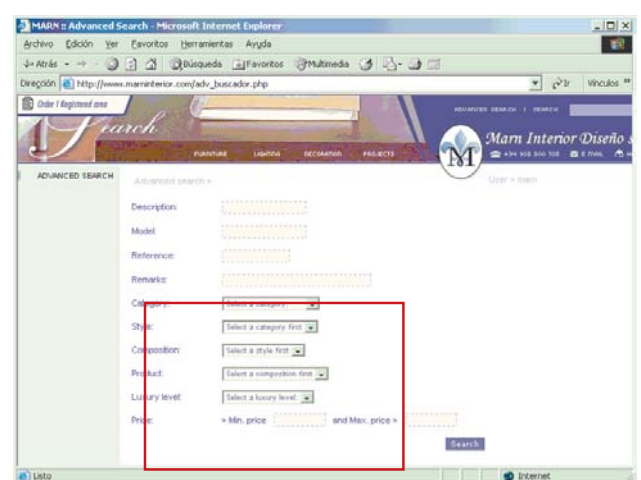
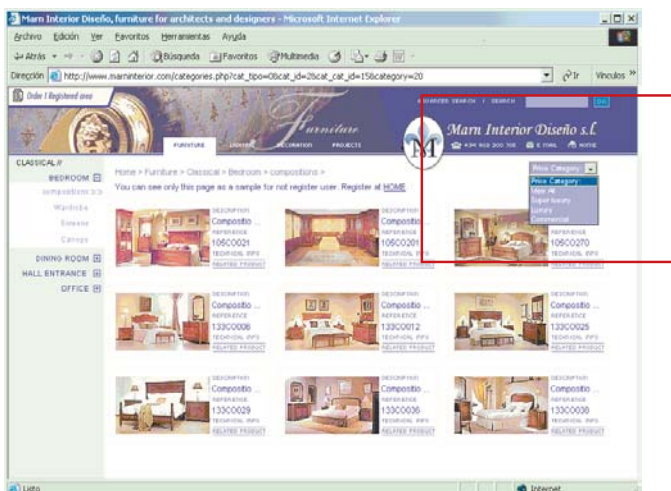


## 8- CAN I ORDER PRODUCTS BY PRICE?

Registered users can order products by price by accessing the Price Category option at the top right. There are various search options related to product prices:

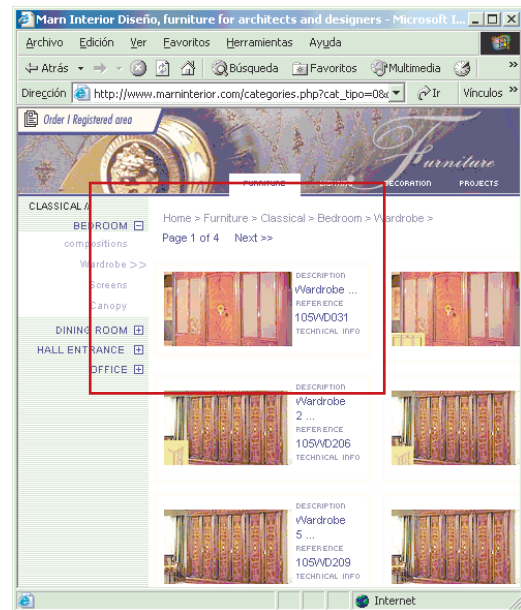
- See commercial price products only
- See luxury price products only
- See superluxury price products only
- Order results from highest to lowest
- Order results from lowest to highest

It is also possible to filter products based on their price using the advanced search. In this case, it is possible to indicate a price range for the products you wish to see.



## 9- CAN I PLACE ORDERS FROM THE WEB PAGE?

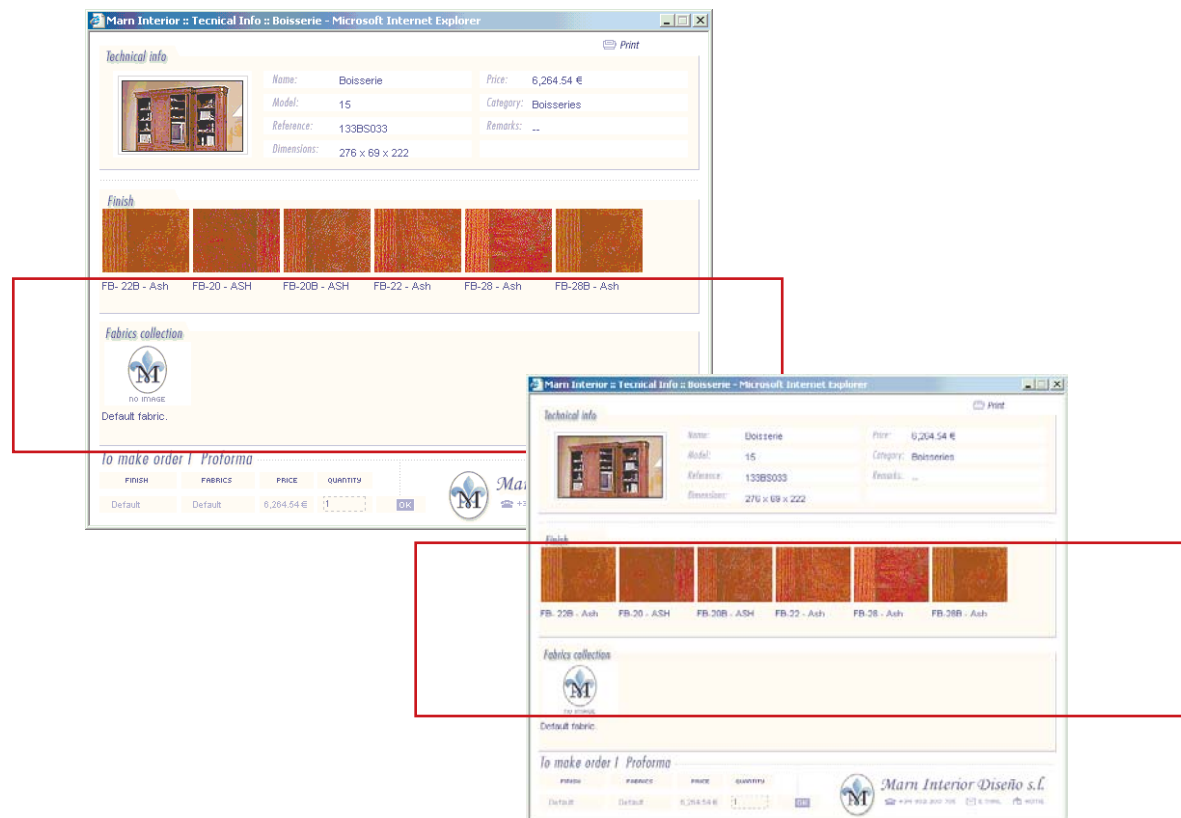
You can place orders from the web page, and you can also make pro forma invoices with no obligation for your client. All the articles have a link to their technical specifications, called “Technical Info.” From here it is possible to add the articles to an order or to a pro forma by proceeding as follows:



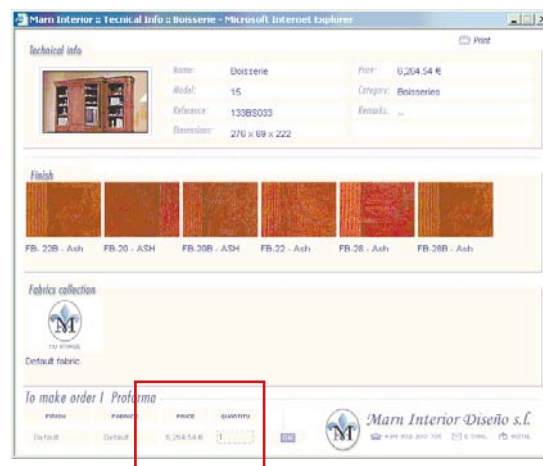
**1- Select a finish for the product.** If you do not click on any, it is understood that the product with the finish indicated by default (in the square) is desired. If the product has no finish, the Marn Interior Diseño logo appears. When you click on the desired finish, the name appears below the date. N.B. PRICES MAY CHANGE IN ACCORD WITH THE FINISH CHOSEN.



**2- Select a series and a fabric.** The fabrics are separated into series. First, select a series. The page reloads and you then select a cloth. If you do not click on a fabric, it is understood that the product with the fabric indicated by default (in the square) is desired. If the product has no fabric, the Marn Interior Diseño logo appears. When you click on the desired fabric, the name appears below the date. N.B. PRICES MAY CHANGE IN ACCORD WITH THE CLOTH SERIES

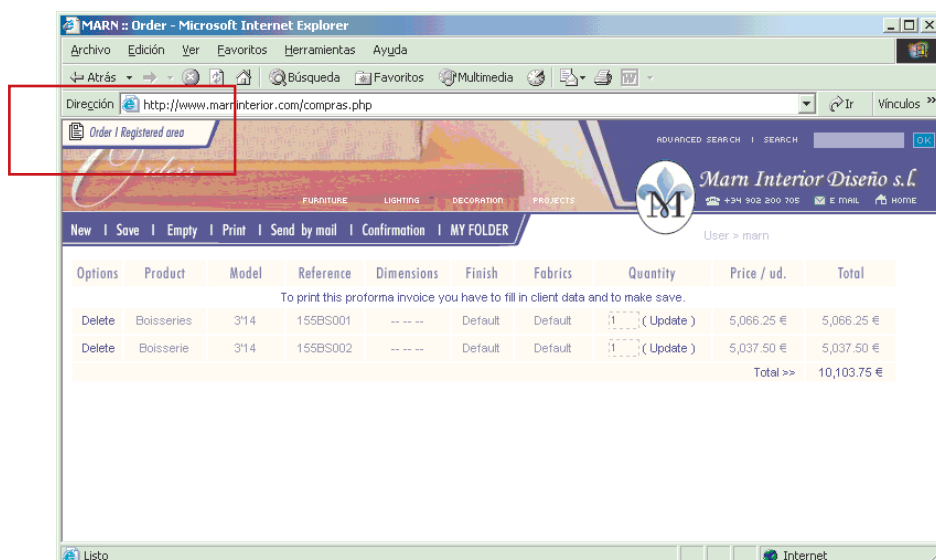


**3- Select the desired quantity.** If you do not change the quantity, it is understood that you want one unit of the product.



Once you have carried out steps 1, 2 and 3, click on OK. The product is added to a pro forma invoice.

**4- To see the selection, go to the orders/pro formas/clients area. Once there, confirm the selection.**





**5- Confirm the pro forma (make the order).** Click on the CONFIRMATION icon in the top menu. A window appears requesting the details of an addressee. You must indicate an addressee.

Options	Product	Model	Reference	Dimensions	Finish	Fabrics	Quantity	Price / ud.	Total
Delete	Boisseries	314	155BS001	---	Default	Default	1 (Update)	5,066.25 €	5,066.25 €
Delete	Boiserie	314	155BS002	---	Default	Default	1 (Update)	5,037.50 €	5,037.50 €
								Total >>	10,103.75 €

**6- Indicate the details of an addressee, which may or may not coincide with those of the user.**

DATA OF CLIENT

Name \*:  Address:

E-mail \*:  Telephone / Fax: \*:

Job title:  City \*:

Company \*:  Country:

\* Required fields



**7- Confirm the order.** Click on the Confirm icon. The order form appears, together with an order number.

Order / Registered area

ADVANCED SEARCH | SEARCH

Marn Interior Diseño s.l.

FURNITURE | LIGHTING | DECORATION | PROJECTS

+34 902 200 705 | E MAIL | HOME

User > marn

<< Back

Your proforma invoice has been confirmed. It is now an order, we'll attend to it soon.

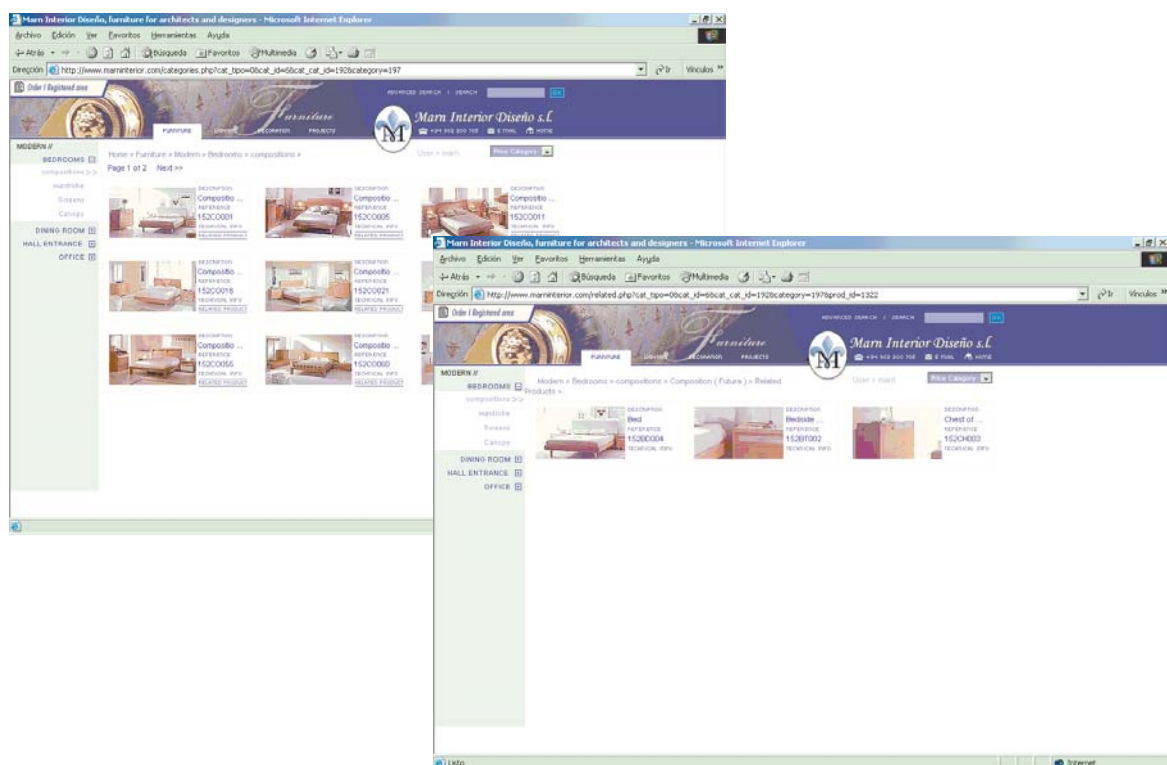
Order n° 9

Datos del usuario registrado				User destination data			
Name :				Name :	d		
Company :	Marn Interior			Company :	qwe		
Job title :				Job title :	qwe		
E-mail :				E-mail :	eqw		
Address :				Address :	qwe		
Country :				Country :	qwe ( qwe )		
Telephone :				Telephone :	qwe		

Product	Model	Reference	Dimensions	Finish	Fabrics	Quantity	Price / ud.	Total
Boisseries	3'14	155BS001	-- --	Default	Default	1	5,066.25 €	5,066.25 €
Boiserie	3'14	155BS002	-- --	Default	Default	1	5,037.50 €	5,037.50 €
Total >>								10,103.75 €

## 10- CAN I BUY A COMPLETE COMPOSITION?

This is not usual practice, but there are compositions that can be bought as a complete item. Said compositions have a price and the purchase includes the products that appear in the photograph with the default finishes and cloths. In general, the compositions may only be acquired by purchasing the products separately. To do this, click on the Related Products icon and all the products in the composition appear.







## 11- CAN I MAKE PRO FORMA INVOICES FOR MY CLIENTS?

All the product selections made but which you do not wish to confirm (make an order) at the time can be saved as pro formas for retrieval at another time, or they can be sent by mail to another possible client. For any type of action, you must indicate an addressee for the pro forma.

The screenshot shows two overlapping browser windows from Microsoft Internet Explorer. The left window displays the 'MARN :: Order' page with a table of items for a pro forma invoice. The right window shows a contact form for sending the pro forma.

Options	Product	Model	Reference	Dimensions	Finish	Fabrics	Quantity	Price / ud.	Total
Delete	Coffee Table	Arco	130CT017	114 x 63 x 45	Default	Default	1 (Update)	229.08 €	229.08 €
Delete	Boisseries	314	155BS001	-- -- --	Frontes	Default	1 (Update)	5,066.25 €	5,066.25 €
Total >>								5,295.33 €	

To print this proforma invoice you have to fill in client data and to make save.

Form fields: Name, Address, Telephone/Fax, City, Country, E-mail, Job title, Company.

Once you have completed the details, you may print out the pro forma, send it by e-mail or simple save it for later.

## 12- HOW CAN I MONITOR MY ORDERS AND MY PRO FORMA INVOICES?

In the clients area, there is a section called MY FOLDER. This section lets you see the pro forma invoices and the orders you have made.

